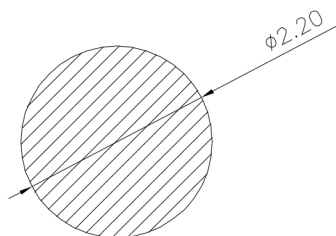
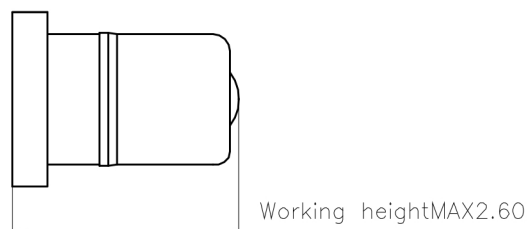
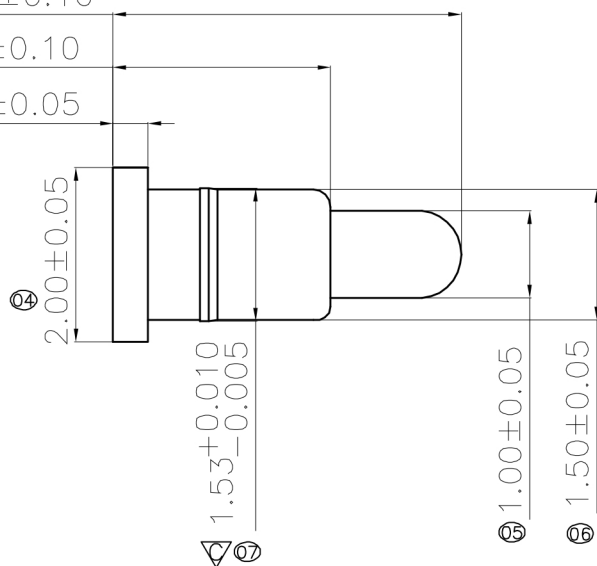


▽①  $4.00 \pm 0.10$

▽②  $2.50 \pm 0.10$

▽③  $0.40 \pm 0.05$




PCB LAYOUT

Layout Tolerance:  $\pm 0.20\text{mm}$

NOTE:

1. Material  
.Plunger: Brass
2. Plating  
.Contact surface: 1u" minimum Au over 80~100u" Ni
3. Electrical  
.Rated Current & Voltage: DC 12V; AC 1~1.65A, 24H  
.Contact Resistance: 25mΩ maximum
4. RoHS COMPLIED PRODUCT.
5. Elasticity: Stroke 0mm: 10gf Stroke 0.25mm: 50gf Stroke 1.40mm (or fully compressed): 100~150gf
6. Life (Million): stroke range Max 0.5~4mm  
Stroke 10000 times Minimize Creep deformation within 0.5gf of Touch Down
7. Temperature:  $-40^{\circ}$ ~ $150^{\circ}$
8. Use: Electronic photography: power, mobile phone, antenna, ground, battery contact.

DIM	TOL	DIM	TOL
X.		X'	3'
X.X	$\pm 0.20$	X.X'	
X.XX	$\pm 0.15$	X.XX'	
X.XXX	$\pm 0.10$	X.XXX'	

 深圳市泰科汉泽精密电子有限公司 Tyco Hanconn Precision Electronics			
DRAW NO.	DATE	MATERIAL: Brass C3604	DRAW NAME:
DESIGN: 譚立強	2012.02.13	FINISH: Au1~3u", Ni, 80~120u"	SEE TABLE
CHECK:		FILE:	
REVIEW:		P/N: SEE TABLE	
REV. A0	SCALE N/A	UNIT: mm	SHEET: 1/1