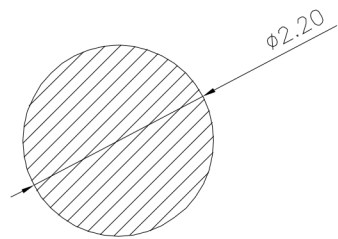
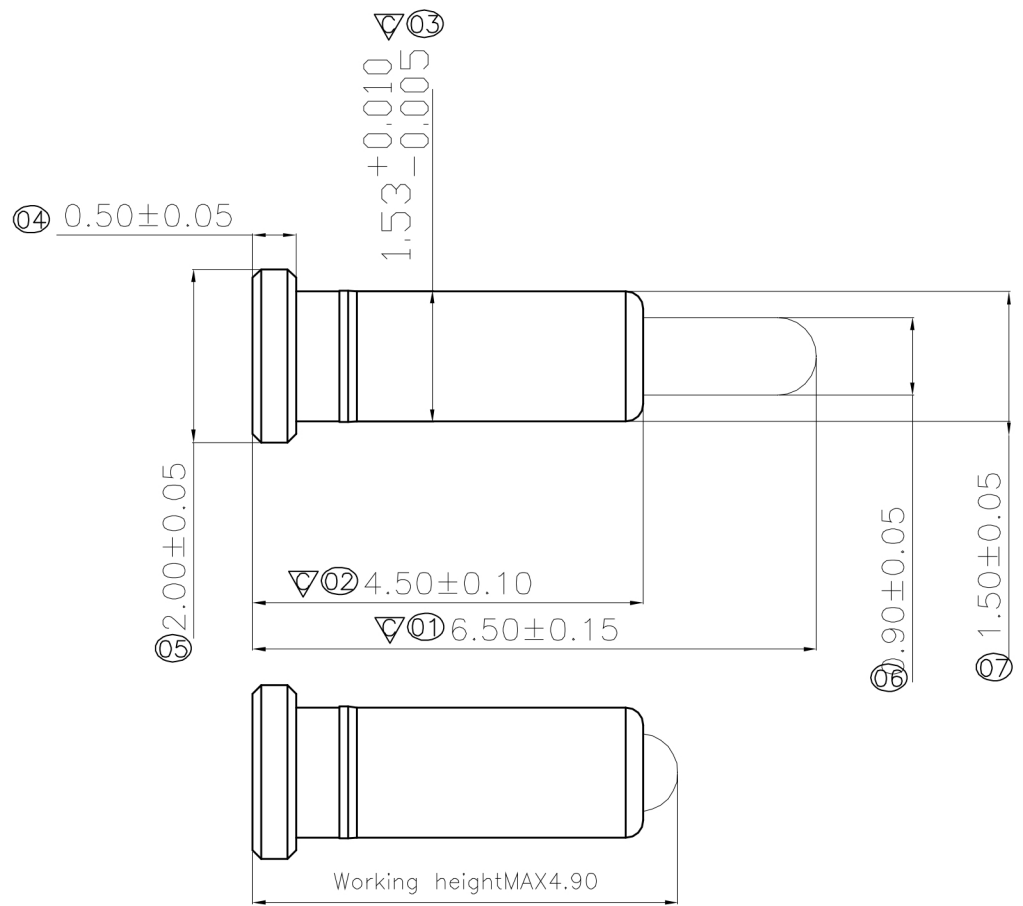


CHANGE THE NEEDLE AND TUBE STRUCTURE					

NOTE:

1. Material
  - .Plunger: Brass
2. Plating
  - .Contact surface: 1u" minimum Au over 80~100u" Ni
3. Electrical
  - .Rated Current & Voltage: DC 12V; AC 1~1.65A, 24H
  - .Contact Resistance: 25mΩ maximum
4. RoHS COMPLIED PRODUCT.
5. Elasticity: Stroke 0mm: 10gf Stroke 0.25mm: 50gf Stroke 1.60mm (or fully compressed): 100~150gf
6. Life (Million): stroke range Max 0.5~4mm Stroke 10000次
7. Temperature: -40~150°
8. Use: ELECTRONIC PHOTOGRAPHY: POWER, MOBILE PHONE, ANTENNA, GROUND, BATTERY CONTACT



PCB LAYOUT  
Layout Tolerance: ±0.20mm

DIM	TOL	DIM	TOL
X.		X'	3'
X.X	±0.20	X.X'	
X.XX	±0.15	X.XX'	
X.XXX	±0.10	X.XXX'	

深圳市泰科汉泽精密电子有限公司  
**Tyco Hanconn Precision Electronics**

Spring Probe

DRAW NO.		DATE	2012.02.13	MATERIAL: Brass C3604	DRAW NAME:
DESIGN:	譚立強			FINISH: Au1~3u", Ni, 80~120u"	SEE TABLE
CHECK:				FILE:	
REVIEW:				P/N: SEE TABLE	
				REV. A1	SCALE N/A
				UNIT: mm	SHEET: 1/1